

Schach für helle Köpfe November 1995

Überraschungen

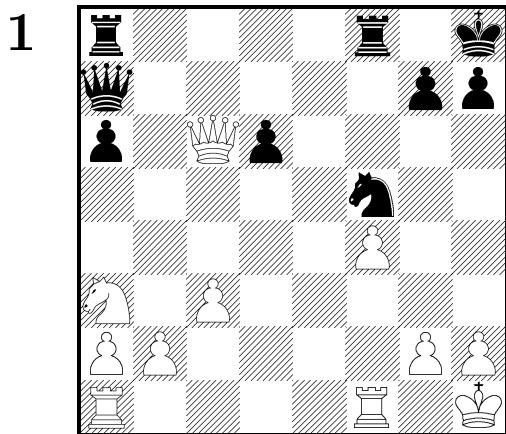


DIAGRAMM 1: Kann Schwarz mattsetzen?

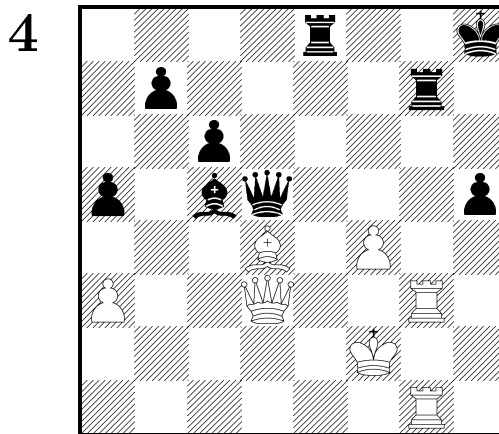


DIAGRAMM 4: Weiß am Zug.

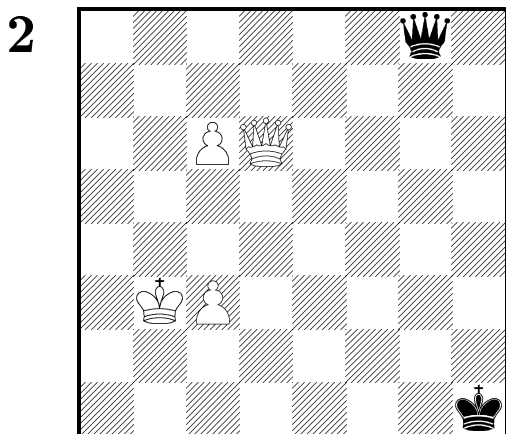


DIAGRAMM 2: Weiß zog 1.c3-c4.

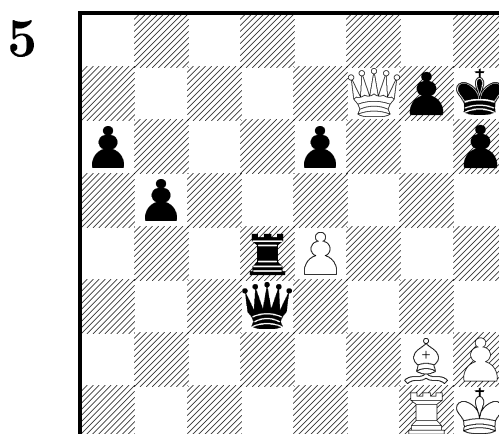


DIAGRAMM 5: Weiß zog 1. ♖×e4.

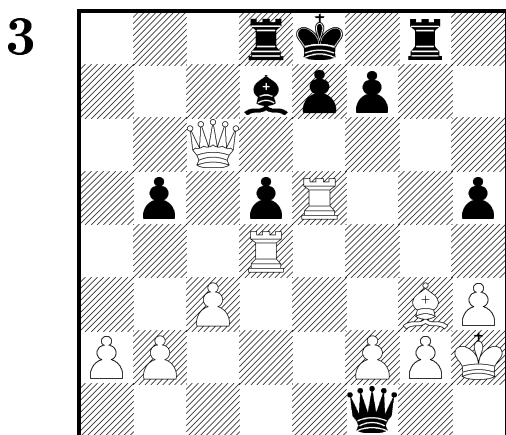


DIAGRAMM 3: Weiß zog 1. ♖e×d5.

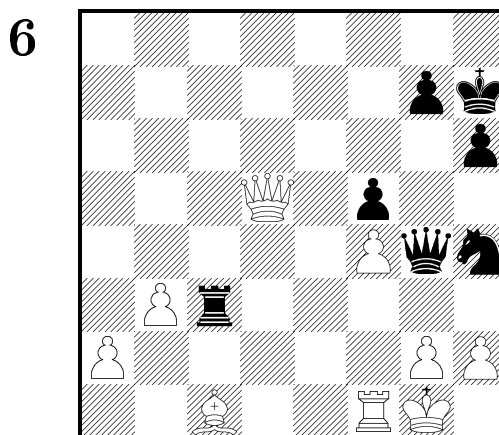


DIAGRAMM 6: Schwarz am Zug.